

FILL CLEAN

THE FILLING SYSTEM
FOR SPRAY PAINT CANS



PROCESS INSTRUCTION



FILLCLEAN SYSTEM

FillClean® is a professional filling system for filling spray paint cans with solvent borne or water-borne OEM paint codes. There is no cleaning required. The fill cans include a propellant solvent blend best suited for the paint technology being filled.

Advantages:

- Easy to operate
- No cleaning and no waste
- Non-toxic to health and skin
- Space saving, simplifying the task
- Compliant with VOC regulations
- Simple and reliable
- Low investment costs
- Added benefit is color indication on the cap



1K FILLCLEAN CAP



Special cap is also the filling cap including the pad for the FillClean machine.

1K FILL IN CAP



Standard cap, an additional filling cap (Part-No. 3990260) is also required for filling with the FillClean machine.

2K CAP



Cap with integrated 2K release button, an additional filling cap and the adapter ring (Part-No. 3990260) are also required for filling with the FillClean machine.



1 Stir the mixed paint.



2 Place the filling pad on the press-in stamp until the securing flap is in position.



3 Press firmly all round the edge of the pad.



4 Place the cylinder on top, insert the FillClean cap and press down firmly.



5 Fill with the mixed original paint. Don't pass the safety line.



6 Place the can with the filled cylinder into the device.



7 Turn the rotating plate of the device slightly upwards to fix the can into position.



8 Close the door to the right to trigger the filling process.



9 Open the door once filling process has stopped. Take can from machine and remove cylinder and cap.



10 Place the spray head on top.



11 Shake the aerosol can
2. Check the color
3. Invert can and press nozzle to clean the valve



12 Remove nozzle and place on Gun Cleaner, spray to remove any remaining paint, then carefully replace onto FillClean.



13 The pad remains in the cap to generate the color.



2K can: FillClean cap for cylinder and adapter ring as cap holder.



Filling steps 1 - 9 same as filling 1K (400 ml) exception: Fig. 7.



2K 250ml: Filling adapter is required to compensate the height during filling.



10 Fit the spray nozzle and adapter ring to hold the cap.



11 Place the release button onto the dome with the smooth side and opening facing the outside.



12 Carefully fit the cap with the color marking.

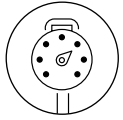
VIDEO

Process video available on SprayMax Youtube Channel:



www.spraymax.com

FILLCLEAN SYSTEM

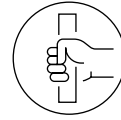


FillClean® pneumatic

- Single-can filling
- Quick product- or paint/ can change possible
- No cleaning required
- Part.-No.: 990 263



Also available:



FillClean® manual

- Single-can filling
- Mobile, manual unit for locations without compressed air and electricity
- No cleaning required
- Part.-No.: 990 249



SET OF CAPS



Part.-No.: 3990260
Packaging unit = 6

250ML FILLING ADAPTER



Part.-No.: 990 014
Packaging unit = 1

FILLING CYLINDER



Part.-No.: 990 247 (pneumatic)
Part.-No.: 990 243 (manual)
Packaging unit = 1



1K FILLCLEAN SYSTEM
WATER-BORNE



1K FILLCLEAN SYSTEM
SOLVENT-BORNE



2K FILLCLEAN SYSTEM
SOLVENT-BORNE
MEDIUM SOLID / HIGH SOLID

Here you will find
the current
paint series
of the manufacturers:

