

# FILL CLEAN

THE FILLING SYSTEM  
FOR SPRAY PAINT CANS



PROCESS INSTRUCTION



## FILLCLEAN SYSTEM

FillClean® is a professional filling system for cleaning-free filling of spray paint cans with the original colour tone. For solvent- and water-borne paint. This filling technology functions in combination with the filling device and the FillClean cans that are pre-filled in the factory in compliance with the respective paint systems of the paint manufacturers.

### Advantages:

- Easy to operate
- No cleaning and no waste
- Non-toxic to health and skin
- Space-saving and simplifying the task at hand
- Compliant with VOC regulations
- Simple and reliable in use
- Low investment costs
- Added benefit through colour indication on the cap
- Every desired tone can be filled in the nuance of choice



Special cap is also the filling cap including the pad for the FillClean device.



Standard cap, an additional filling cap (Art.-No.: 990 246) is also required for filling with the FillClean device.



Cap with integrated 2K release button, an additional filling cap and the adapter ring (Art.-No.: 990 246) are also required for filling with the FillClean device.



1 Stir the mixed paint



2 Place the filling pad on the press-in stamp until the securing flap is in position



3 Press firmly all round the edge of the pad



4 Place the cylinder on top, insert the FillClean cap and press down firmly



5 Fill with the mixed original paint



6 Place the can with the filled cylinder into the device



7 Turn the rotating plate of the device slightly upwards to fix the can into position



8 Close the door to the right to trigger the filling process



9 Remove the cylinder and the cap



10 Place the spray head on top



11 1. Shake the can  
2. Check the colour  
3. Spray the valve until empty (if necessary see TMB)



12 The pad remains in the cap to generate the colour code

### FILLING 2K (400 ML, 250 ML)



0 2K can: FillClean cap for cylinder and adapter ring as cap holder



1-9 Filling steps 1 - 9 same as filling 1K (400 ml) exception: Fig. 7



7 2K 250ml: Filling adapter is required to compensate the height during filling



10 Fit the spray head and adapter ring to hold the cap



11 Place the release button onto the dome with the smooth side and opening facing the outside



12 Carefully fit the cap with the colour marking

### VIDEO

Process video available on SprayMax Youtube Channel:



# FILLCLEAN SYSTEM

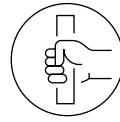


## FillClean pneumatic

- Single-can filling
- Quick product- or paint/ can change possible
- Cleaning-free
- Art.-No.: 990 263



Also available:



## FillClean manual

- Single-can filling
- Mobile, manual unit for locations without compressed air and electricity
- Cleaning-free
- Art.-No.: 990 249

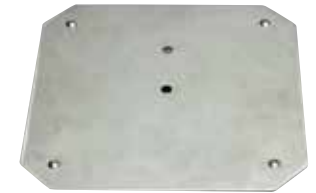


## SET OF CAPS



Art.-No.: 990 246  
Packaging unit = 6

## FIXING PLATE



Art.-No.: 990 242  
Packaging unit = 1

## 250ML FILLING ADAPTER



Art.-No.: 990 014  
Packaging unit = 1



1K FILLCLEAN SYSTEM  
WATER-BORNE



1K FILLCLEAN SYSTEM  
SOLVENT-BORNE



2K FILLCLEAN SYSTEM  
SOLVENT-BORNE / HIGH SOLID

Here you will find  
the current  
paint series  
of the manufacturers:

