

Primer/Filler

1K E-Coat Primers

1K primer designed for direct to steel and aluminum applications. Excellent for: inner body panels, engine compartments, trunks, OEM painted surfaces, support rails, body filler, fiberglass and SMC. **Available in 6 colors!**

Advantages

- › Replicates OEM gloss level
- › Fast drying and durable
- › Excellent adhesion
- › Paintable; corrosion resistant
- › Compatible with automotive base coats

Product Number

White 368 0230

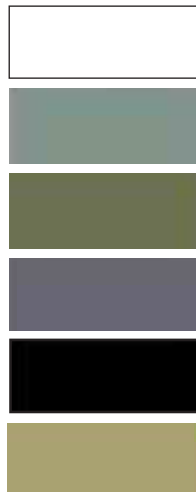
Light Green 368 0231

Olive Green 368 0232

Gray 368 0233

Black 368 0234

Tan 368 0235



Application Notes

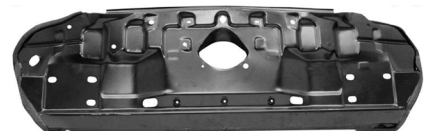
SprayMax 1K E-Coat Primers are ideally suited to a wide variety of repair applications.



Support Rails



Engine Compartments



Inner Body Panels